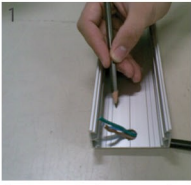


Installation

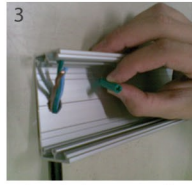
A. MOUNTING SC2 HOUSING



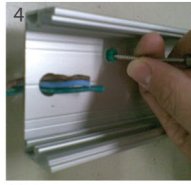
1 Mark out the location of mounting holes provided on the wall of the housing.



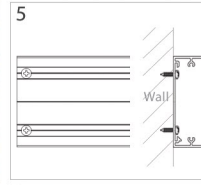
2 Drill mounting holes on marked location.



3 Align the housing to the wall and insert wall plugs into drilled holes.

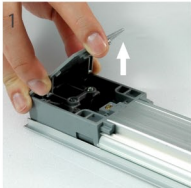


4 Tighten screws to secure housing onto wall.

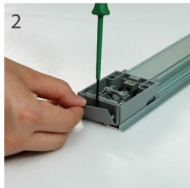


5 Mounting screw positioning.

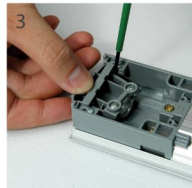
B. INSTALLING SFC2 MODULAR TRACK (SIDE TERMINATION)



1 Untighten screws on safety cover and remove safety cover.



2 Remove dust cover from end terminal.



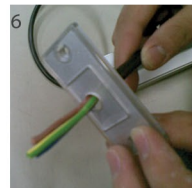
3 Using a screwdriver, remove strain relief from the housing.



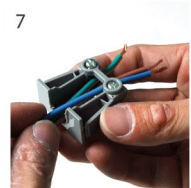
4 Cut and remove cable entry blank from the strain relief.



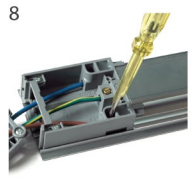
5 Cut and remove cable entry from SC2 End Cap.



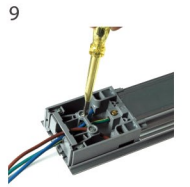
6 Route cables through the strain relief.



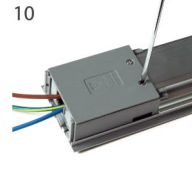
7 Route cable through the end cap



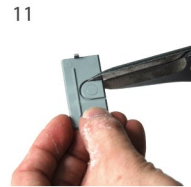
8 Terminate wires to terminals with reference to "Wiring Instructions".



9 Snap on strain relief and tighten screws to secure wires.



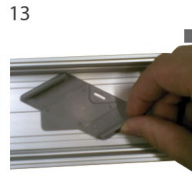
10 Attach safety cover and tighten screws to secure.



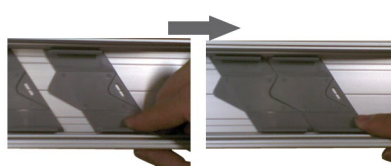
11 Cut and remove cable entry blank from dust cover.



12 Attach dust cover.



13 Attach backplates to housing with reference to "Backplate Guide".



14 Snap SFC2 Modular Track onto housing.



15 Attach and secure the end cap with a pre-drilled hole onto the housing.



15 Attach the screw cap provided on both sides of the housing.



16 Full assembly of SC2.